

PoE All-in-One

SIRAM i-COMPACT PRO

Automatic
ZOOM & FOCUS



ICES



PoE SOLUTION LICENSE PLATE RECOGNITION



Power Over Ethernet (PoE)

The capture unit has a splitter that distributes the data to the camera and power supply to the led board.

PoE + Power - 802.at Type 2 30W



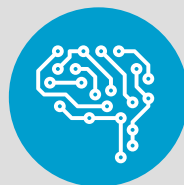
Simple, easy and inexpensive installation

You only need a single Ethernet cable to bring power and data, what allows to reduce installation costs.



All-in-One & Server Based

OCR5 can be run on both, its own camera as in any computer on the network.



Deep Learning

OCR5 uses Artificial Intelligence technology (AI- Deep Learning) for the License Plate Recognition - Reliability > 99%.



Approved for EU, USA and Canada

The equipment has been certified by CE, FCC and ICES.

TECHNICAL SPECIFICATIONS

i-COMPACT PRO

Material	Stainless steel 304 of 1.2 mm treatment of removing for phosphate and painted with powder
Internal dimensions	150x220 mm (AnxProf); Height 700 mm
Temperature range	-20°C / +50°C
Window	65x232 mm (An x Al)
Weight	10 Kg.
Accessories	Electric board to install components inside
Colour	Black RAL 9005 TEXT

CAMERA IP

Model	IP Camera Day/Night with remote zoom and focus
Picture sensor	Progressive scan RGB CMOS 1/2.5"
Objective lens	Motorized Zoom 3,5-10 mm, F1.7
Video Compression	Motion JPEG/MPEG-4/H.264
Resolution	Configurable from 160x90 to 3072x1728 pixels
Picture Frequency	H.264 Motion JPEG 30 fps with supply of 60 Hz, and 25fps with supply of 50 Hz
Compression Levels	Multiple streams in H.264, Motion JPEG and technology Axis Zipstream
Video transmission	Controllable frame rate and bandwidth VBR/MBR H.264
Shutter Speed	From 1/62500 to 2s
Connectors	Ethernet 10BaseT/100BaseTX PoE, RJ45
Processor	ARTPEC; RAM: 1 GB; Flash: 512 MB
Power	PoE Type 1 Class 3 max. 11,5 W, typical 8,4 W
Operation Conditions	0 °C to 50 °C Humidity 10 to 85% RH (non-condensing)
Homologations	EMC: EN 55032 Class B, EN 50121-4, IEC 62236-4, EN 55024, EN 6100-6-1, EN 6100-6-2, FCC Part 15, Subpart B, Class A y B, ICES-003 Class B, VCCI Class B, RCM AS/NZS CISPR 22 Class B, KCC KN32 Class B, VCCI Class B, KN35. Security : IEC/EN/UL 60950-1, IEC/EN 62471, IS 13252. Net: NIST SP500-267
Weight	Al: 101mm ø 149mm; Weight 550 gr.

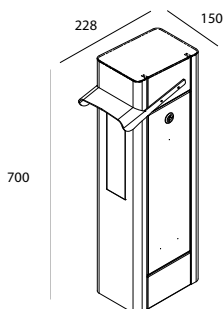
IR PROJECTOR

Operation	IR illuminator with SMD technology for B/W cameras - IR sensitive
Number of LEDS	12 Leds High power
Longitud Onda	850 mm
Power Supply	10,5 Vdc - 15 Vdc I _{max} 1500 mA

SPLITTER PoE

Operation	Distributes the data to the camera and the power supply to the LED board
Outputs	12 Vdc, 5Vdc y PoE
Power Supply	PoE+ - 802.at Type 2 30W

DIAGRAM



ANCHORING TYPE

